



## Hollow Piston Cylinder

### Single acting (spring return), push type

#### Description :

Hollow piston cylinders are single acting, spring return cylinders, suitable to use with hydropneumatic intensifiers. The piston is provided with a through hole.

#### Advantages :

Hollow piston cylinders can be easily adapted on existing fixtures. The cylinder can be mounted on the stud, by increasing the stud length. Automation can be achieved very fast.

#### Installation :

With the help of a back mounting plate, the hollow piston cylinder can be mounted on the stud as shown in fig.1. The cylinder can also be used to pull the stud, by mounting it on the other side of the base plate as shown in fig.2. For this arrangement, a wiper should be provided to the stud for 10 mm stroke cylinders.

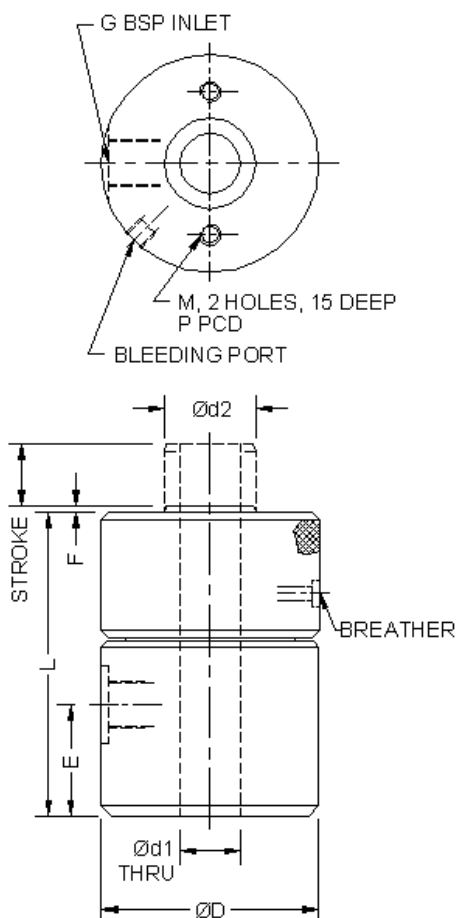
#### Specifications :

- Maximum operating pressure - 200 bar.
- Return spring back pressure - @ 1 bar.

#### Notes :

- As the cylinder is single acting, spring return, a breather is provided. It should be protected from cutting liquids and coolants.
- For ordering the seal kit, add the prefix "S" to the part number.

#### Dimensional details :

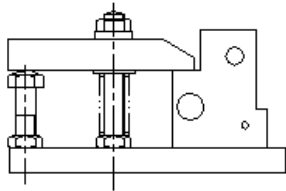


FORCE*	11 kN	13 kN	22 kN	22 kN
D	61	56	68	68
d1	17	13	17	17
d2	25.4	25.4	25.4	34.9
E	28	21	12	21
F	2	2	2	2
G	1/4"	1/4"	1/4"	1/4"
M	M6	M6	M8	M8
P	40	40	55	55
<b>PART NO.</b>	<b>1510100</b>	<b>1510200</b>	<b>1520100</b>	<b>1520200</b>
STROKE±1	10	25	10	25
L	85	103	80	110
OIL VOLUME	7.5 cc	22 cc	15 cc	37 cc
MINIMUM SPRING FORCE	232 N	173 N	381.1 N	244 N
WEIGHT	1.5 kg	1.5 kg	2 kg	2.5 kg

\* Force is specified at 150 bar.

All dimensions are in mm, Overall dimension tolerance  $\pm 0.5$  mm. Subject to change for improvement. (Revision - July12)

Application Example :



MANUAL CLAMPING

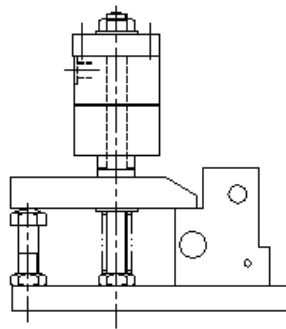


FIGURE 1

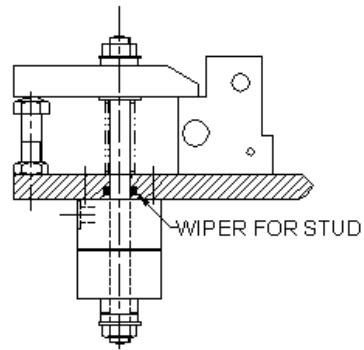


FIGURE 2